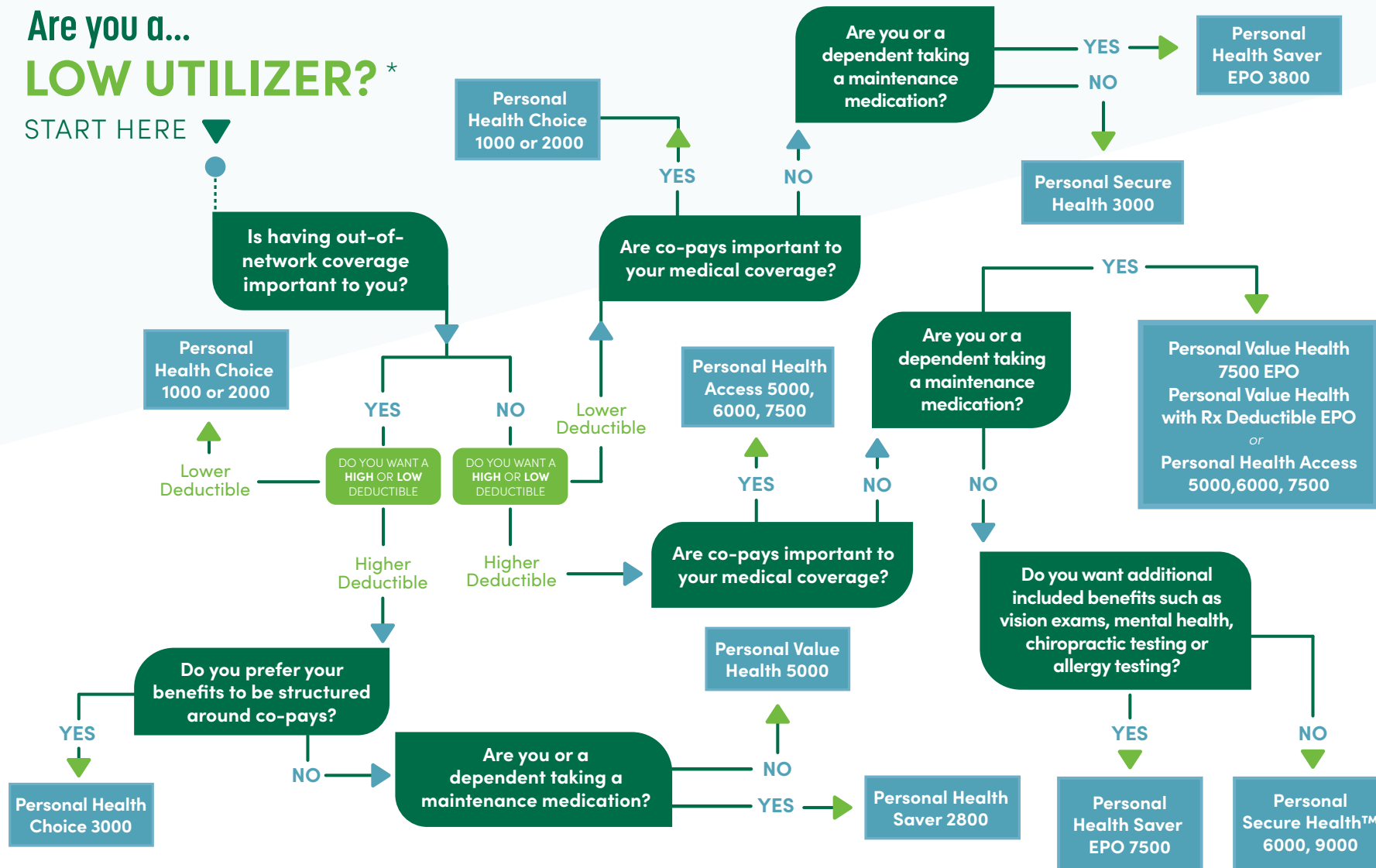


Which personal health plan may be right for YOU?



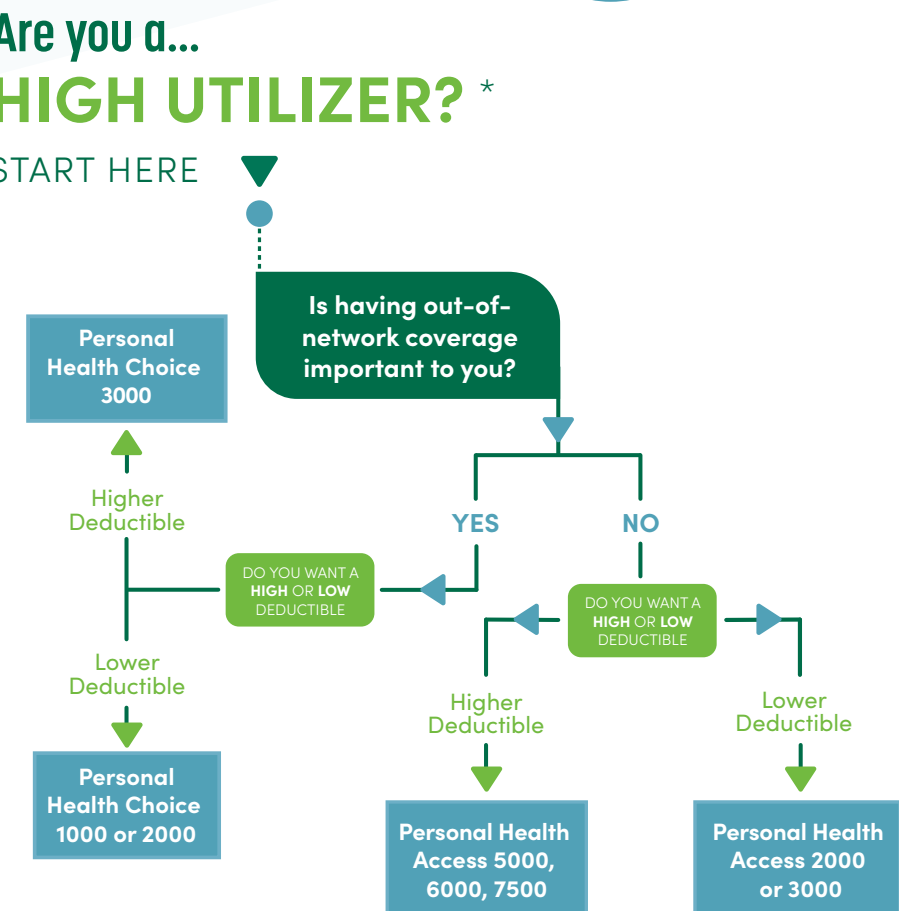
Are you a... LOW UTILIZER? *

START HERE



Are you a... HIGH UTILIZER? *

START HERE



If you would like to talk through this decision with one of our trusted representatives, give us a call at **1-844-467-GUIDE** (1-844-467-4843), Monday through Friday, from 7 a.m. to 6 p.m. CT.

*Utilization is based on the presence of ongoing medical or prescriptive needs.